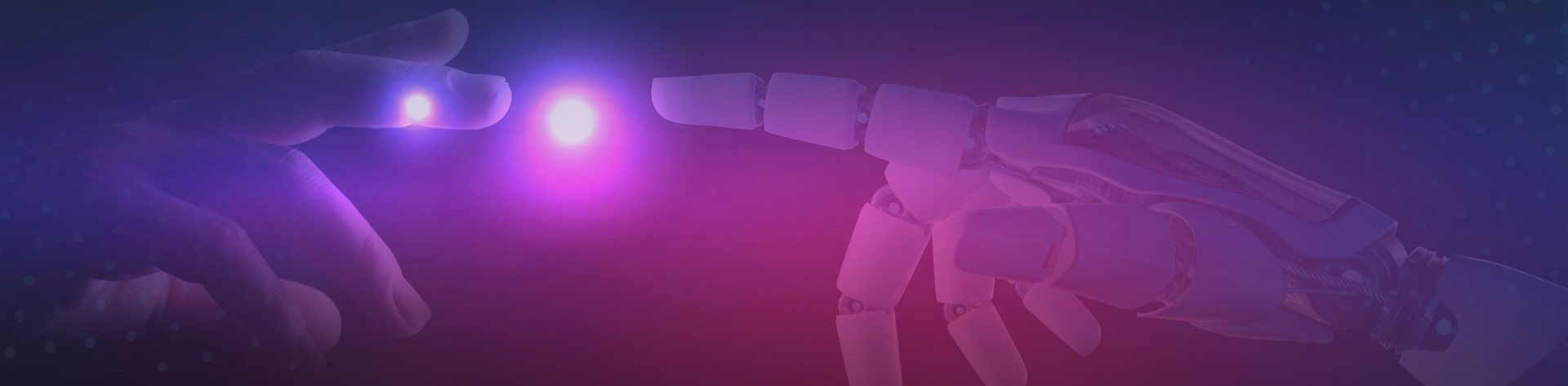




# All-out **PHYGITAL**

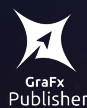
The community gathering for  
Creative Tech professionals

**22-23 NOV**  
Brussels





GraFx is our **secret sauce**  
that will boost **creative**  
**automation** enabling  
our customers to **create**  
**at scale.**



# Smart Templates in GraFx Publisher

Andy Russell – Client Success Engineer CHILI publish





# Boost your workflow

- Often designs need repurposing, from Facebook through to banner ads
- Each has its own differing requirements
- Instead of numerous format options why not combine?
- Match each use case with specifics



# Alternate layout

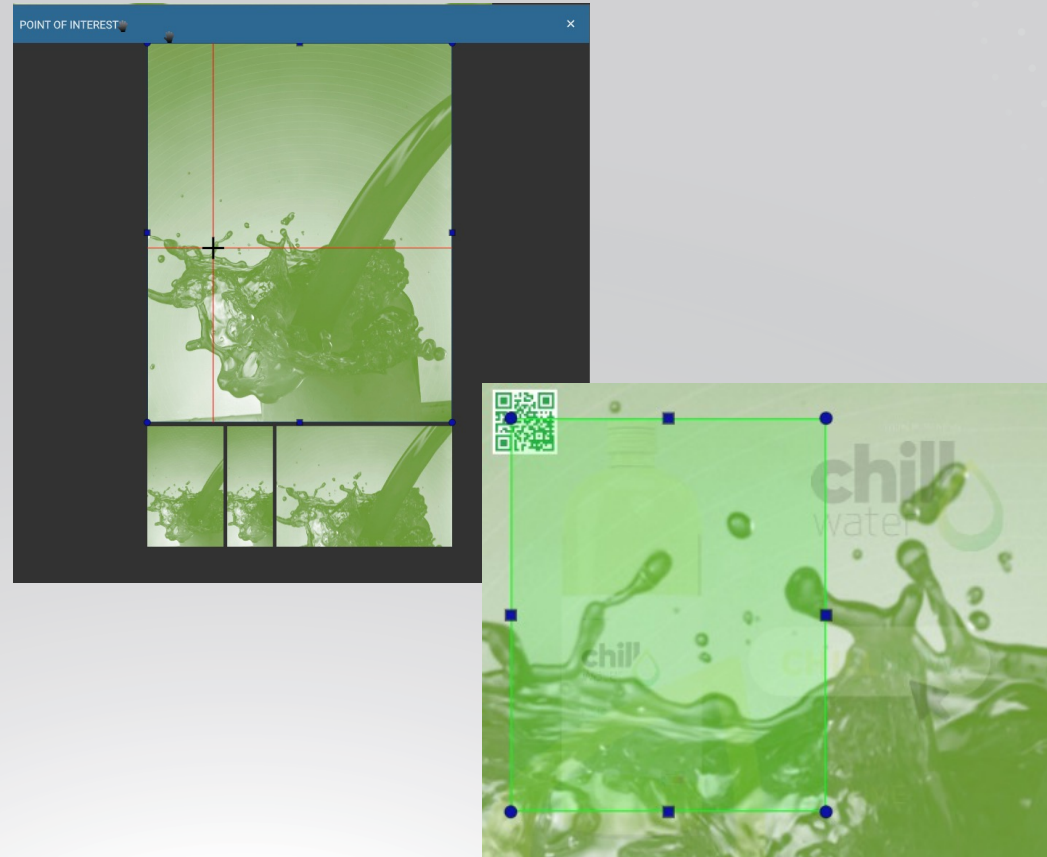
Simplifies template creation, maintenance, and the user's experience

- Upload an InDesign doc
- Add a shape via an upload
- Create a QR code
- Add some pre-determined colours using a snippet
- Set some sizes required
- Add some flavours
- Tie flavours to colours
- Try out sizes and flavours

# Smart Fit Images

Imagine several images and several output sizes to produce. That could mean many interventions for a designer.

- Same image, different Point of Interest can highlight a specific point to be focused on
- Subject Position can highlight a specific area to show how this can adjust positioning
- Save time

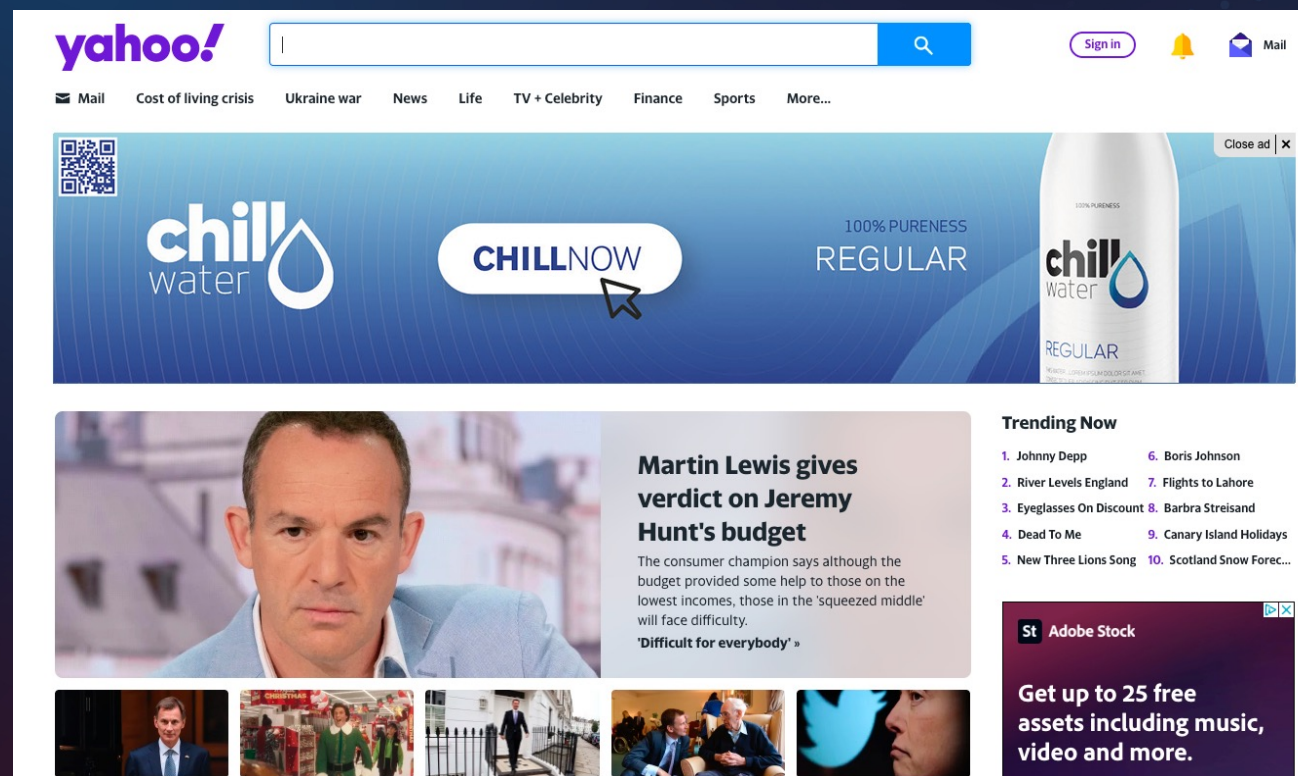




# Dynamic layout

Simplify complex templates by utilizing features together:

- Property formulas
- Reference points
- Relative positioning
- Alternate layouts





# Boost production

Throw some data at a template for:

- Multiple sizes
- Multiple designs
- Different formats



# Onto the live system!



**GraFx**  
Publisher